

DOOR AND FRAME SCHEDULE

NUMBER	SIZE	DOOR		FRAME		DETAILS			FIRE RATING	HARDWARE GROUP	GLASS	REMARKS		
		MATERIAL	TYPE	MATERIAL	TYPE	HEAD	JAMB	BULL						
100A	2'-3"-0"x1'-0"x1 3/4"	AL	A	ANOD	AL	2	ANOD	---	---	---	---	1	---	
100B	2'-3"-0"x1'-0"x1 3/4"	AL	A	ANOD	AL	2	ANOD	---	---	---	---	2	---	
102	3'-0"x1'-0"x1 3/4"	KD	B	STN/VARN	HM	1	PNT	---	---	---	---	3	---	
104	3'-0"x1'-0"x1 3/4"	KD	B	STN/VARN	HM	1	PNT	---	---	---	---	4	---	
105	3'-0"x1'-0"x1 3/4"	KD	B	STN/VARN	HM	1	PNT	---	---	---	---	4	---	
106	3'-0"x1'-0"x1 3/4"	KD	B	STN/VARN	HM	1	PNT	---	---	---	---	4	---	
107A	3'-0"x1'-0"x1 3/4"	KD	B	STN/VARN	HM	1	PNT	---	---	---	---	4	---	
107B	2'-6"x1'-0"x1 3/4"	KD	C	STN/VARN	HM	1	PNT	---	---	---	---	5	---	
108	3'-0"x1'-0"x1 3/4"	KD	C	STN/VARN	HM	1	PNT	---	---	---	---	6	---	
109	3'-0"x1'-0"x1 3/4"	KD	C	STN/VARN	HM	1	PNT	---	---	---	---	6	---	
110	3'-0"x1'-0"x1 3/4"	AL	A	ANOD	AL	3	ANOD	---	---	---	---	7	---	
111A	2'-3"-0"x1'-0"x1 3/4"	AL	A	ANOD	AL	1	ANOD	---	---	---	---	1	---	
111B	2'-3"-0"x1'-0"x1 3/4"	KD	B	STN/VARN	HM	1	PNT	---	---	---	---	2	---	
112	3'-0"x1'-0"x1 3/4"	KD	C	STN/VARN	HM	1	PNT	---	---	---	---	8	---	
113A	3'-0"x1'-0"x1 3/4"	KD	B	STN/VARN	HM	1	PNT	---	---	---	---	4	---	
113B	3'-0"x1'-0"x1 3/4"	KD	B	STN/VARN	HM	1	PNT	---	---	---	---	4	---	
114	2'-3"-0"x1'-0"x1 3/4"	KD	C	STN/VARN	HM	1	PNT	---	---	---	---	4	---	
116	3'-0"x1'-0"x1 3/4"	KD	B	STN/VARN	HM	1	PNT	---	---	---	---	4	---	
117	3'-0"x1'-0"x1 3/4"	KD	C	STN/VARN	HM	1	PNT	---	---	---	---	90 MIN.	8	---
118	3'-0"x1'-0"x1 3/4"	KD	C	STN/VARN	HM	2	PNT	---	---	---	---	6	---	
119A	2'-3"-0"x1'-0"x1 3/4"	KD	A	STN/VARN	HM	2	PNT	---	---	---	---	1	---	
119B	2'-3"-0"x1'-0"x1 3/4"	KD	C	STN/VARN	HM	2	PNT	---	---	---	---	7	---	
120A	2'-3"-0"x1'-0"x1 3/4"	KD	C	STN/VARN	HM	2	PNT	---	---	---	---	90 MIN.	9	---
120B	3'-0"x1'-0"x1 3/4"	KD	C	STN/VARN	HM	2	PNT	---	---	---	---	90 MIN.	9	---
121	3'-0"x1'-0"x1 3/4"	KD	C	STN/VARN	HM	2	PNT	---	---	---	---	90 MIN.	10	---

DOOR HARDWARE GROUPS

GROUP #1:	GROUP #2:	GROUP #3:	GROUP #4:	GROUP #5:	GROUP #6:	GROUP #7:	GROUP #8:	GROUP #9:	GROUP #10:
HINGES EXIT DEVICE THRESHOLD WEATHERSTRIP CLOSER WITH HOLD OPEN SWEENEY CYLINDER VERTICAL ROD (BY ALUMINUM DOOR SUPPLIER)	HINGES PUSH/PULL CLOSER WITH HOLD OPEN	LOCKSET (OFFICE)	LOCKSET (CLASSROOM)	HINGES LOCKSET (PRIVACY)	HINGES PUSH/PULL CLOSER	HINGES LOCKSET (PASSAGE)	LOCKSET (STOREROOM) CLOSER SMOKE GASKET	HINGES PUSH/PULL CLOSER SMOKE GASKET MAGNETIC HOLD OPEN	HINGES LOCKSET (CLASSROOM) SMOKE GASKET VERTICAL ROD MAGNETIC HOLD OPEN

ROOM FINISH SCHEDULE

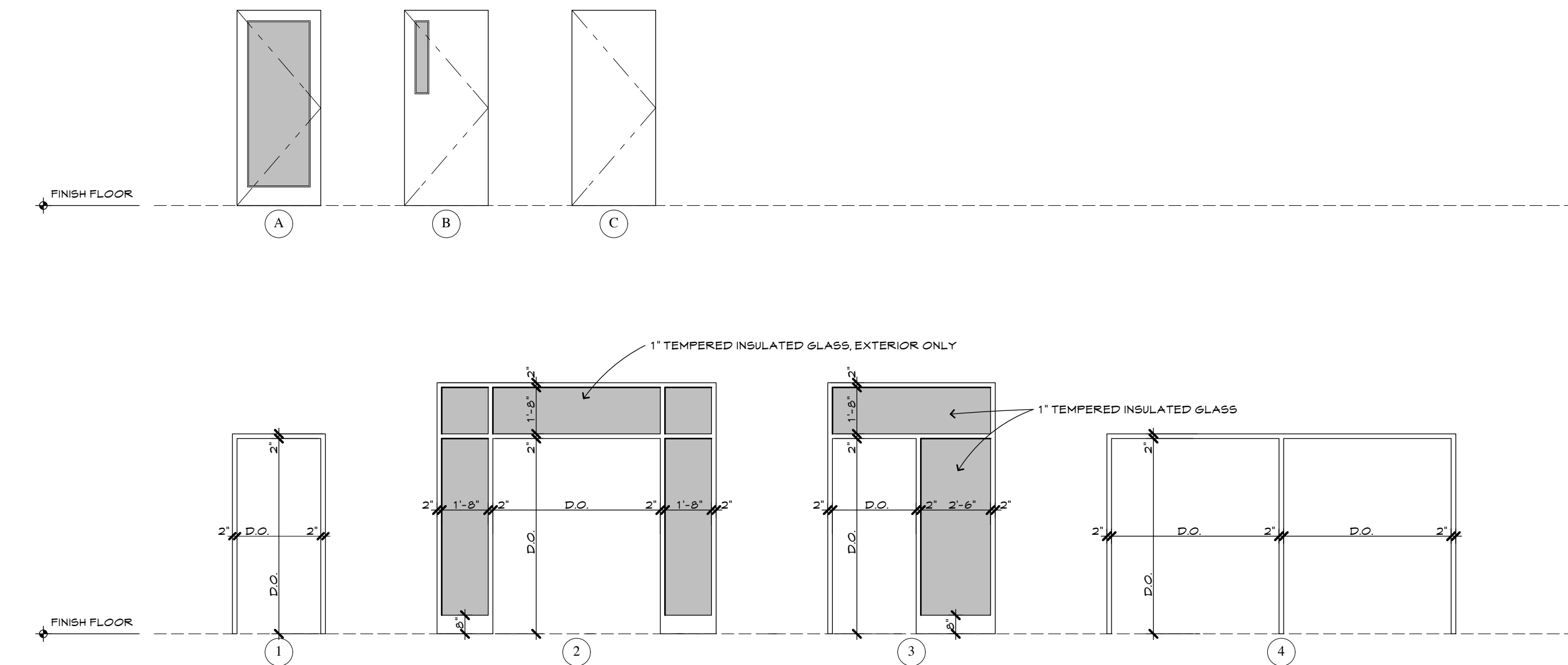
NUMBER	ROOM NAME	AREA (SQ. FT.)	OCCUPANT LOAD	FLOORS	BASE	NORTH WALL	SOUTH WALL	EAST WALL	WEST WALL	CEILING	REMARKS	REMARKS
100	VESTIBULE	---	---	---	CONC./SLR	GB/VB	GB/PNT	GB/PNT	GB/PNT	ACT	9'-0"	---
101	COATS	---	---	---	CONC./CPT	GB/CPT	GB/PNT	GB/PNT	GB/PNT	GB/PNT	12'-0"	---
102	OFFICE	---	---	---	CONC./CPT	GB/CPT	GB/PNT	GB/PNT	GB/PNT	ACT	9'-0"	---
103	SUPPLY	---	---	---	CONC./CPT	GB/CPT	GB/PNT	GB/PNT	GB/PNT	ACT	9'-0"	---
104	CLASSROOM	---	---	---	CONC./CPT	GB/CPT	GB/PNT	GB/PNT	GB/PNT	ACT	9'-0"	---
105	CLASSROOM	---	---	---	CONC./CPT	GB/CPT	GB/PNT	GB/PNT	GB/PNT	ACT	9'-0"	---
106	CLASSROOM	---	---	---	CONC./CPT	GB/CPT	GB/PNT	GB/PNT	GB/PNT	ACT	9'-0"	---
107A	CLASSROOM	---	---	---	CONC./CPT	GB/CPT	GB/PNT	GB/PNT	GB/PNT	ACT	9'-0"	---
108B	CHILD RESTROOM	---	---	---	CONC./CT	GB/CT	GB/PNT.4	GB/PNT.4	GB/PNT.4	ACT	9'-0"	9'-3" HIGH CT MAINSCOT ON ALL WALLS
108	MEN RESTROOM	---	---	---	CONC./CT	GB/CT	GB/PNT	GB/CT	GB/PNT.4	ACT	9'-0"	---
109	WOMEN RESTROOM	---	---	---	CONC./CT	GB/CT	GB/PNT	GB/CT	GB/PNT.4	ACT	9'-0"	---
110	HALLWAY	---	---	---	CONC./CPT	GB/CPT	GB/PNT	GB/PNT	GB/PNT	ACT	9'-0"	---
111	YOUTH	---	---	---	CONC./CPT	GB/CPT	GB/PNT	GB/PNT	GB/PNT	ACT	10'-6"/12'-0"	---
112	MECHANICAL	---	---	---	CONC./SLR	GB/VB	GB/PNT	GB/PNT	GB/PNT	GB/PNT	12'-0"	---
113	KITCHEN	---	---	---	CONC./CT	GB/CT	GB/PNT	GB/PNT	GB/PNT	ACT	9'-0"	---
114	STORAGE	---	---	---	CONC./SLR	GB/VB	GB/PNT	GB/PNT	GB/PNT	GB/PNT	12'-0"	---
115	YOUTH COMMONS	---	---	---	CONC./CPT	GB/CPT	GB/PNT	GB/PNT	GB/PNT	ACT	9'-0"	VARIES
116	MULTI-PURPOSE	---	---	---	CONC./CPT	GB/CPT	GB/PNT	GB/PNT	GB/PNT	ACT	9'-0"	---
117	KITCHEN	---	---	---	CONC./CT	GB/VB	GB/PNT	GB/PNT	GB/PNT	GB/PNT	11'-0"	---
118	MECHANICAL	---	---	---	CONC./CPT	GB/VB	GB/PNT	GB/PNT	GB/PNT	GB/PNT	VARIES	---
119	ADULT COMMONS	---	---	---	CONC./CPT	GB/CPT	GB/PNT	GB/PNT	GB/PNT	GB/PNT	VARIES	---
120	SERVING	---	---	---	CONC./CT	GB/CT	GB/PNT	GB/PNT	GB/PNT	GB/PNT	9'-0"	---

FINISH ABBREVIATIONS

ACT	ACOUSTICAL CEILING TILE	OSB	ORIENTED STRAND BOARD
ANOD	ANODIZED	PH	PRE-HUNG DOOR
ANP	ACOUSTICAL WALL PANEL	PLAM	PLASTIC LAMINATE
CPT	CARPET	PLAS	PLASTER
CEM PL	CEMENT PLASTER	PLYN	PLYWOOD
CMU	CONCRETE MASONRY UNITS	PNT / PT	PAINT
CONC	CONCRETE	POL	POLISH
CT	CERAMIC TILE	QT	QUARRY TILE
ENAM	ENAMEL	RB	RUBBER BASE
ETR	EXISTING TO REMAIN	SBV	STAIN VARNISH
FBD	FIBER BOARD	SCM	SOLID CORE WOOD
FF	FACTORY FINISH	SFC	SPECIAL FLOOR COATING
FIN	FINISH	SGEN	SEMI GLOSS ENAMEL
FRP	FIBERGLASS REINFORCED PANEL	SHV	SHEET VINYL
FRP	FLAT WALL PAINT	SLK	SEALER
GALV	GALVANIZED	SST	STAINLESS STEEL
GFRG	GLASS FIBER REINFORCED CONCRETE	SPC	SPECIAL WALL COATING
GFRP	GLASS FIBER REINFORCED PLASTER	TER	TERRAZZO
GLAM	GLUE LAMINATED WOOD	UNFN	UNFINISHED
GB	GYP/UM BOARD	VB	VINYL BASE
HGT	HOLLOW GLAZ TILE	VCT	VINYL COMPOSITION TILE
HBDB	HARDBOARD	VP	VENEER PLASTER
HWD	HARDWOOD	VT	VINYL TILE
HM	HOLLOW METAL	VVC	VINYL WALL COVERING
MCA	MINERAL CORE WOOD	WB	WOOD BASE
MDF	MEDIUM DENSITY FIBERBOARD	WD	WOOD
MET	METAL		

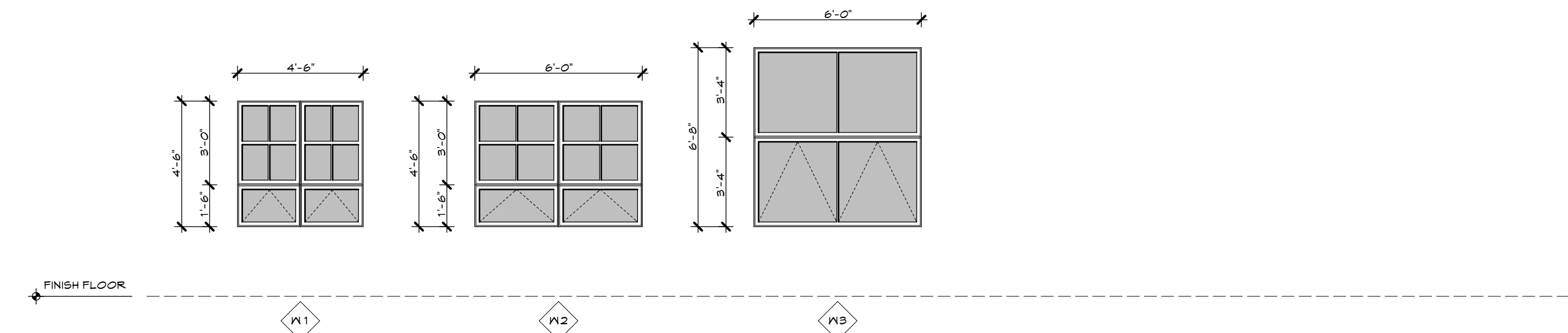
DOOR AND FRAME ELEVATIONS

1/4" = 1'-0"



WINDOW ELEVATIONS

1/4" = 1'-0"



NEGEN
ARCHITECTS

STUDIO: 22517 178th Ave.
COLD SPRING, MN 56320
CORRESPONDENCE: Suite 200
TELEPHONE: 202.685.3304
FACSIMILE: 202.685.4039
WEB: www.negenarchitects.com

PEACE LUTHERAN CHURCH
1000 Red River Avenue North
Cold Spring, MN 56320

REVISION DATE

I hereby certify that this plan, specification, or report was prepared by me or under my direct supervision and that I am a duly Licensed Architect under the laws of the State of Minnesota.
Print Name: Lon Negen
Signature: *Lon Negen*

Date: March 31, 2010 License No: 41402

Room Finish
Schedule & Door &
Frame Schedule

COMM. NO.:
SCALE:
DATE: MARCH 31, 2010
DRAWN BY: LAE

Construction Document

A8.1